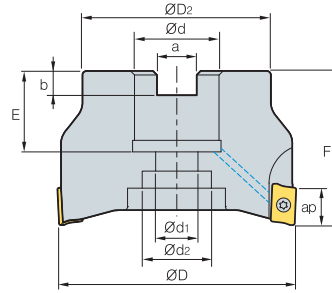
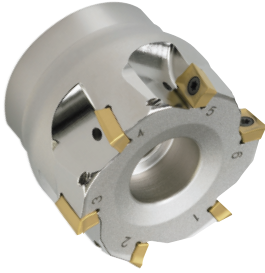


AMC(M)3000S-K



AA
90°
• AR: 14°
• RR: -12°~8°

(mm)

Designation	ØD	ØD2	Ød	Ød1	Ød2	a	b	E	F	ap	$\frac{m}{kg}$	
AMCM	3040HS-K	40	34	16	9	14	8.4	5.6	18	40	16	0.15
	3050HS-K	50	42	22	11	18	10.4	6.3	20	40	16	0.24
	3063HS-K	63	49	22	11	18	10.4	6.3	20	40	16	0.24
AMC (AMCM)	3080HS-K	80	57	25.4 (27)	14	20	9.5 (12.4)	6 (7)	25 (22)	50	16	0.36
	3100HS-K	100	67	31.75 (32)	18	26	12.7 (14.4)	8 (8)	32 (28)	63	16	0.61

()Metric size

Available inserts



Designation	Cermet		Coated										Uncoated			page			
	CN2000	CN30	NCM325	NCM335	NCM535	NCM545	PC2505	PC2510	PC3700	PC6510	PC9530	PC9540	PC5300	PC5400	PD2000		G10	H01	H05
APKT 1604PDSR			●						●	●									
1604PDSR-MF			●										●						
1604PDSR-MM			●	●					●	●	●		●						
160432R-MM1																			
1604PDFR-MA														●			●	●	
1604PDFR-MA2																	●		
160416FR-MA2																			
160432FR-MA2																			
1604PDFR-MA3																	●	●	
160420FR-MA3																			

E05

Available arbors

Designation	Ød	NC arbors
AMCM 3040HS-K	16	BT□□-FMC16-□□
3050HS-K	22	BT□□-FMC22-□□
3063HS-K		
AMC (AMCM) 3080HS-K	25.4	BT□□-FMA25.4-□□
	27	BT□□-FMC27-□□
3100HS-K	31.75	BT□□-FMA31.75-□□
	32	BT□□-FMC32-□□

Parts

Specification	Screw	Wrench
Ø40~Ø100	FTKA0410	TW15S

Available inserts E05 Available arbors and bolt E400~E402

